

Dals Långed Park

Bridging Communities, Crossing Cultures



Food
Semi-private



Fire
Public



Sauna
Intimate



Long-time
Swedish Residents

Steneby Academy
of Design and Crafts

Recent
Syrian Arrivals

BEFORE



AFTER



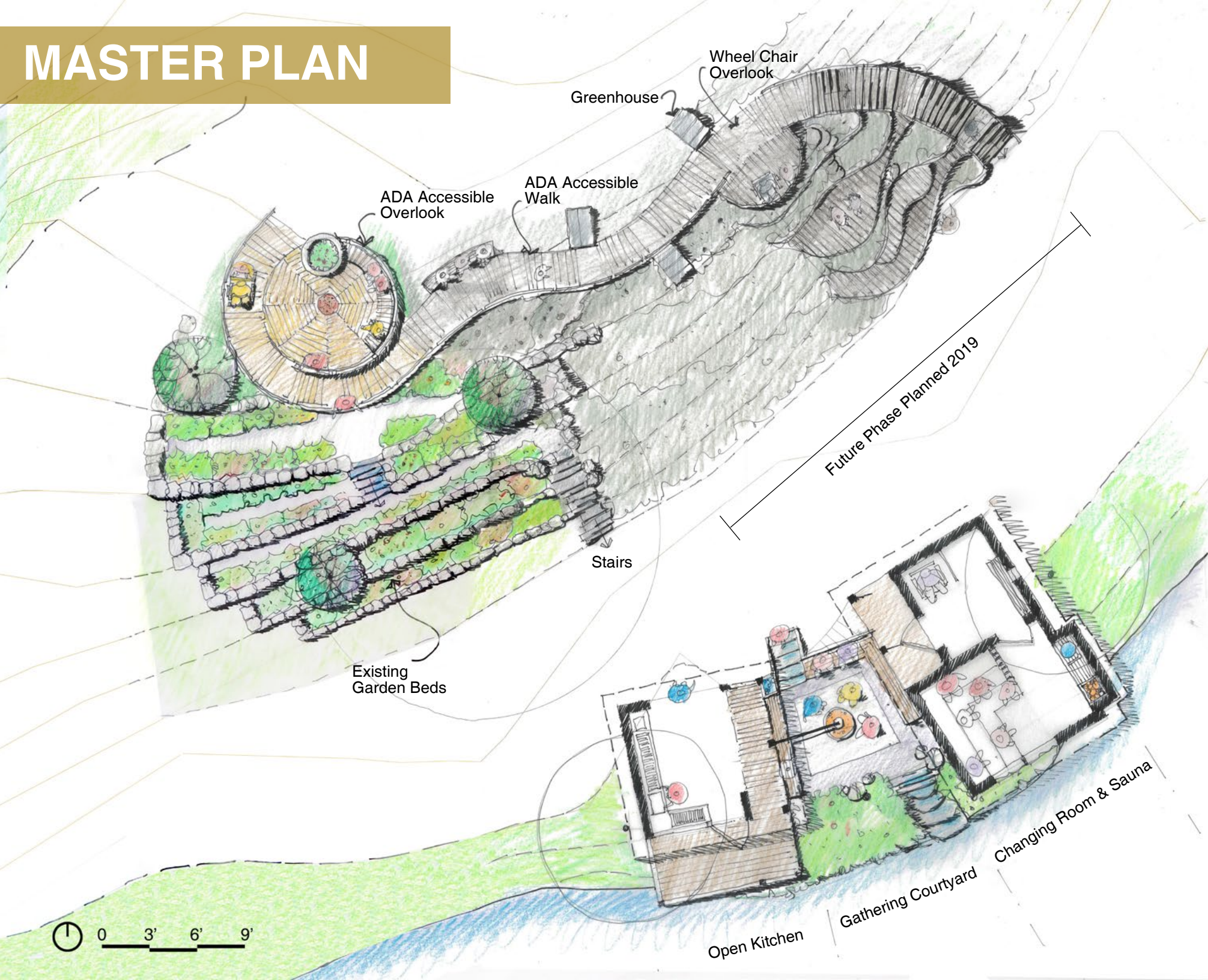
BEFORE



AFTER



MASTER PLAN



- 2018/06/17
Project Introduction
- Initial Design
- Open Review I
- 2018/06/25
Revise Design
- Open Review II
- 2018/07/01
Framing Construction
- 2018/07/19
On-Site Workshop
- 2018/07/20
Details Construction
- 2018/08/12
Project Dedication
- 2019
Future Phases

OPEN HOUSE



Discussing project goals with a community member.



Syrian community members express their vision for the park.



Syrian community member talking to a professor.

OPEN STUDIO



Syrian community members share big ideas for the park.



UW and Steneby students work within their design teams.



Syrian community members express their feeling about a shared sauna.

OPEN REVIEW



Community members votes on favorite aspects of different designs.



UW and Steneby students presenting in both English and Swedish.



Watercolor rendering of the proposal.



Student teams present several design options to the community.

COMMUNITY BUILDING



Community members helped in all phases of construction.



Students make traditional shingles from aspen they harvested.



Syrian community members cooked for students, helping to bridge cultures.



Syrian artist designs the mosaic pattern for the overlook.

LOCAL CRAFT



Steneby students taught craft workshops to UW students.



A student layers hand-made aspen shingles.



Local blacksmith work with students to fabricate metalwork.

ON-SITE WORKSHOP



Community members share food and provide feedback on the sauna and the outdoor kitchen.



Instructor shows community members the project from the overlook.



Volunteers, students, and other community members share experiences.

PROJECT DEDICATION



Community and students at the dedication celebration.



Community members share treats in the newly dedicated open kitchen.



The ADA accessible path allows wheelchair users to enjoy the park.

DESIGN OUTCOME



DESIGN OUTCOME



Students used handmade aspen shingles and reused pine boards for the wrapping facade.



Sauna & Changing Room



Gathering courtyard



Open Kitchen

INTERIOR DESIGN



Completed sauna room with view of lake and surrounding nature



A student enjoys the afternoon sun and the sounds of the lake in the sauna.



Built-in furniture in the changing room



Kitchen with hand-made sliding doors, wood stove, and dining set.



The south window of the kitchen, looking toward the lake

CULTURAL DETAILS



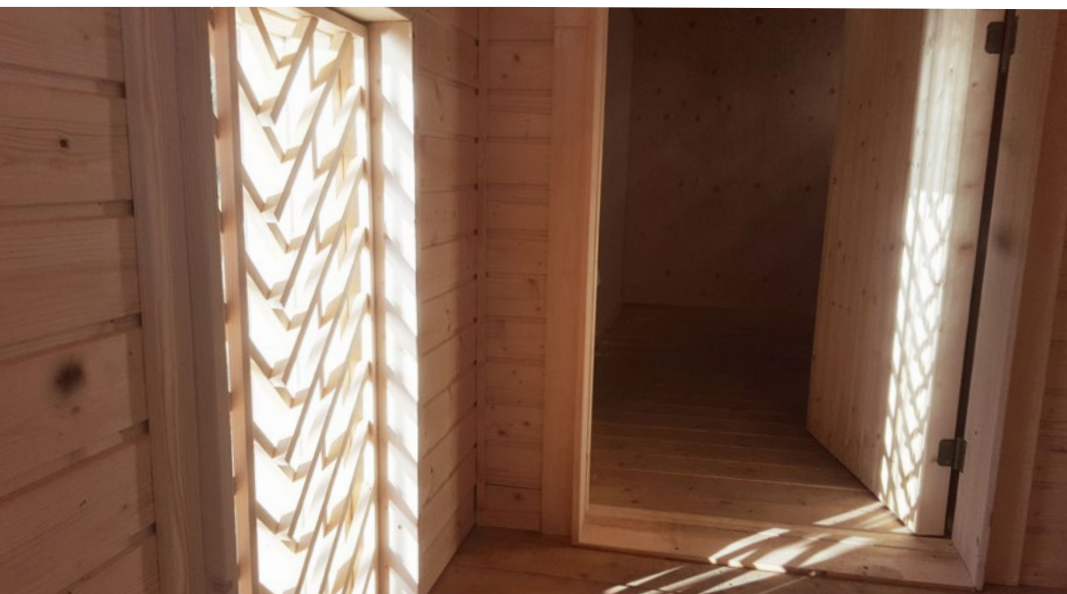
Mosaic designed by local Syrian artist marks the community on the overlook.



Water basin crafted by Steneby students, inspired by Swedish boats.



Stone unearthed on-site was embedded in the new bench, marking the memory.



Screen pattern was inspired by the form of local ferns.



Gathering around fire pits is a tradition shared by both Syrians and Swedes.

PROJECT IN USE



Community members grill over the fire pit on a winter day.



Stone steps offer safe entry into the water.



The sauna is programs for separate gender use on specific nights.



Kids love the bridge colors of the overlook.